



Light Measurement Report

Print date: 10/3/2025

Measurement date and time: 9/29/2025 12:29:12 PM – Measurement no. VFR-250929-0166-MS

Operator: Shawn Blaszk

Tested Light Source

Product Name Dram: DR-M-PC98_PC98-MTP-27-0.1_10V_UNV
Manufacturer RBW
Product Description Dram-Medium-Glossy White_Glossy White-Matte PET-2700K-0.1% Dimming, 0-10V Control, 120V-277V "Universal Input" (Driver External), Input Current: 350mA, Driver Model: EldoLED Solodrive 561/S



Light Quality

CRI: 91.6

Color Temperature

2705 K

Color Match

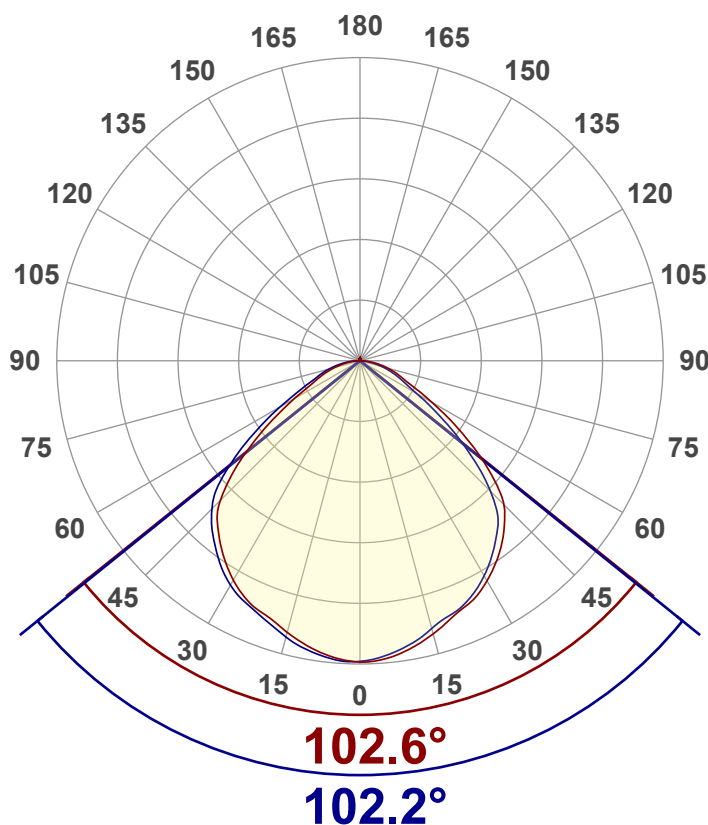
CIE1931
x: {CIEx#}
y: {CIEy#}

Summary of Results

Total Lumen Output 1170 lm
Luminaire Efficacy 79 lm/W
Peak Intensity and Beam Angle 479 cd - 102.3°
Color Rendering TM13-18 R_r 91.2 – R_g 97.5
Color Shift, CIE duv Duv 0.0013
MacAdams Steps 3
Flicker SVM 0.05 – PstLM 0.19
Input Power, Power and Displ. Factors 14.8 W – PF 0.95 – DPF 0.98
Input RMS Voltage and Current 120 V – 0.129 A
Frequency of Input Power 60 Hz

Luminous Intensity diagram

Unit: 0-100% of peak intensity



Main Values

Output (total Lumen) 1170 lm
Lumen Up% / Down% 1.13% / 98.87%
Peak Intensity 479 cd
Beam Angle (50%-FWHM) 102.34°

Cut-off Angle

Average 2,5% 170.6°

Field Angle

Average 10% 147.8°

Intensity Ratio

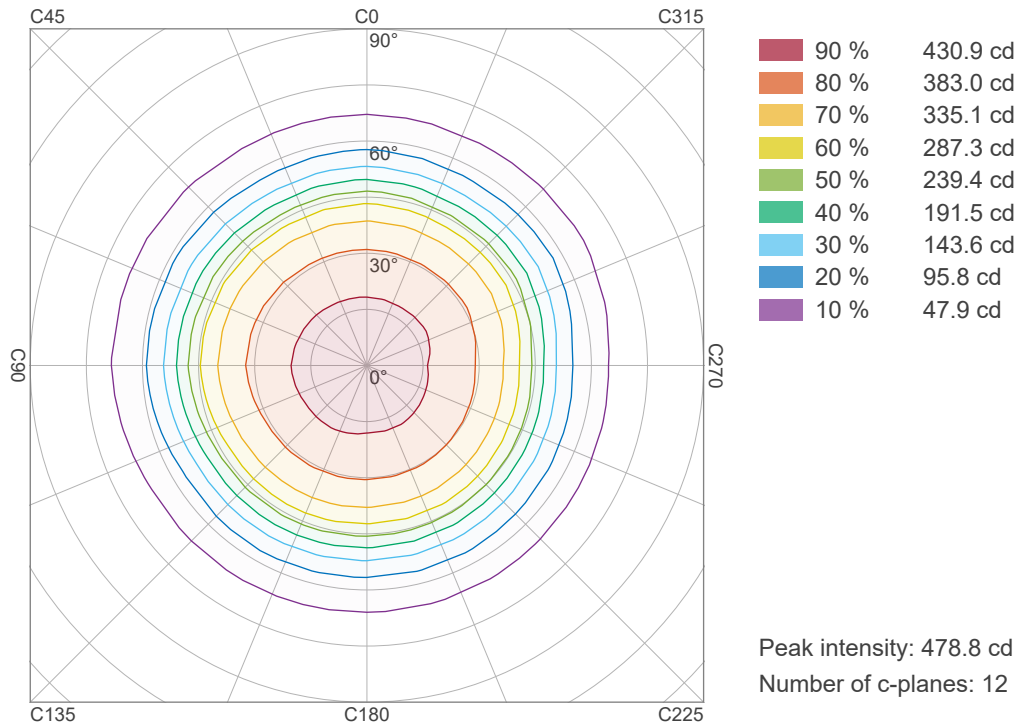
In 120° cone 86.2%
In 90° cone 62.0%

C000-C180

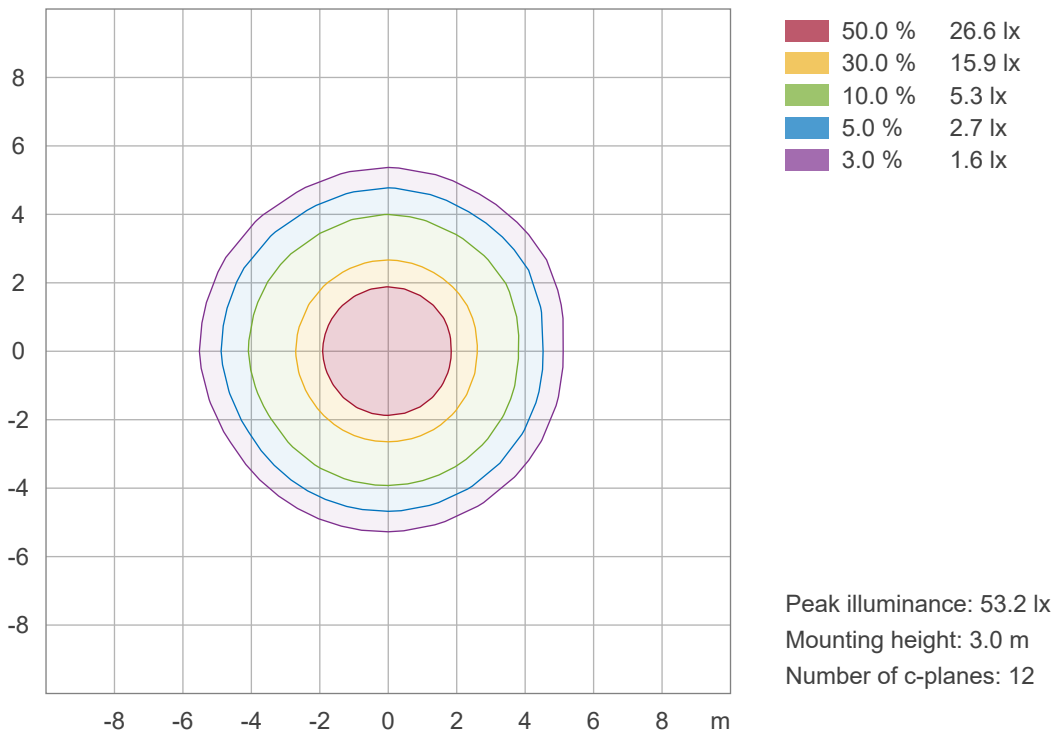
C090-C270



Iso-intensity Diagram (Iso-candela)



Iso-illuminance Diagram (Iso-lux)





Light Measurement Report

Print date: 10/3/2025

Measurement date and time: 9/29/2025 12:29:12 PM – Measurement no. VFR-250929-0166-MS

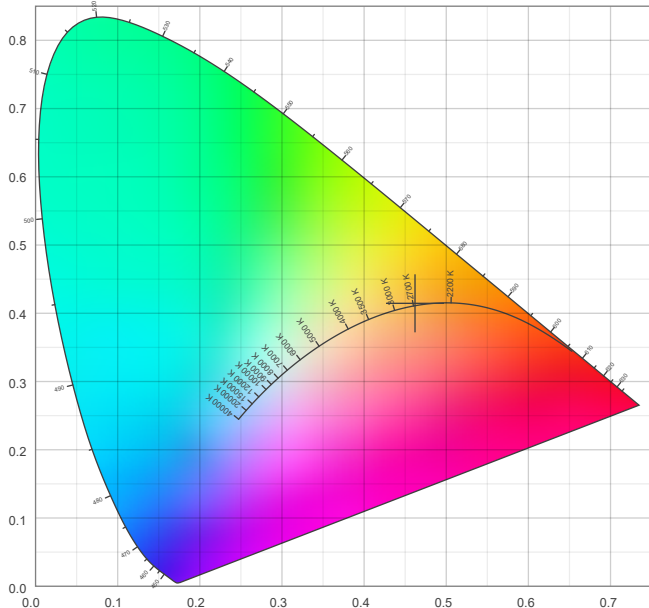
Operator: Shawn Blaszk

Color details

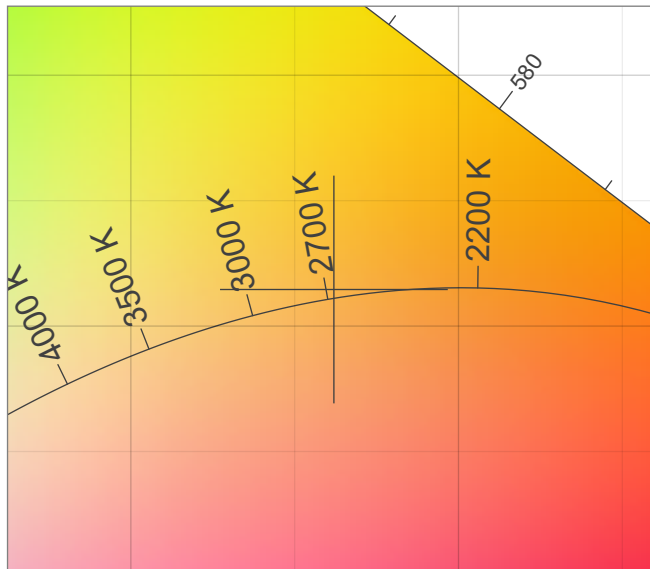
Correlated Color Temperature, Target CCT = 2705 K
Correlated Color Temperature, Measured CCT = 2705 K
Color Rendering Index CRI 91.6
Color Rendering Index, R9 (red component) R9 = 49.9
Color Rendering TM30-18 R_r 91.2 – R_g 97.5
Color Quality Scale CQS = 89.9

MacAdam Steps 3
Color coordinates CIE 1931 (x;y) = (0.462;0.415)
Color coordinate CIEs 1960 (u;v) = (0.262;0.353)
Color deviation from BBL Duv = 0.0013
Color coordinate CIEs 1976 (CIELUV)(u';v') = (0.262;0.529)

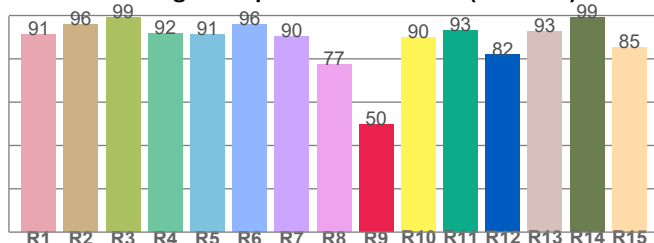
CIE 1931



CIE 1931 – zoomed on Planckian locus



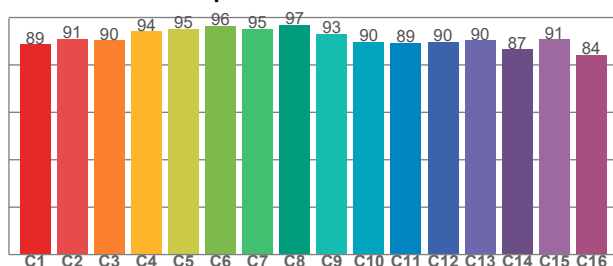
Color Rendering Index per reference color (CIE 1995)



CRI R values, only R1-R8 are used to calculate final CRI value

R1	R2	R3	R4	R5	R6	R7	R8	R9	R10	R11	R12	R13	R14	R15
91.3	95.8	99.2	91.8	91.2	96.0	90.3	77.2	49.9	89.7	93.3	81.8	92.5	99.0	85.5

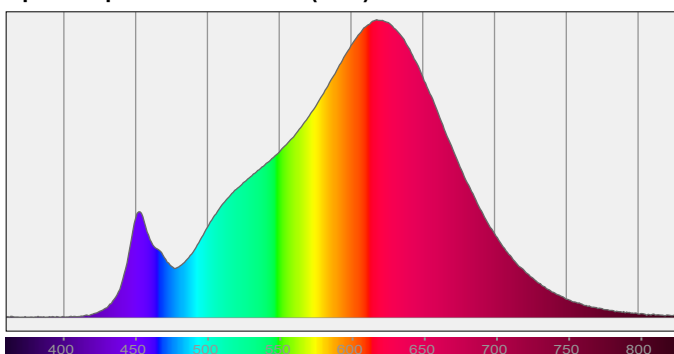
TM30-18 Rf-values per hue bin



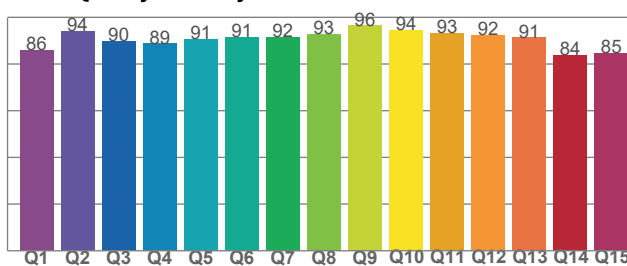
TM30 C values, 16 binned values out of total of 99 C values

C1	C2	C3	C4	C5	C6	C7	C8	C9	C10	C11	C12	C13	C14	C15	C16
88.7	90.9	90.4	94.2	95.3	96.5	95.1	96.9	93.0	89.7	89.4	89.6	90.3	86.5	90.8	84.2

Spectral power distribution (SPD) / W/nm – 0-100%



Color Quality Scale by reference color



CQS Q values

Q1	Q2	Q3	Q4	Q5	Q6	Q7	Q8	Q9	Q10	Q11	Q12	Q13	Q14	Q15
85.9	94.2	89.9	88.8	90.7	91.5	91.6	92.8	96.5	94.4	93.1	92.3	91.2	83.7	84.5



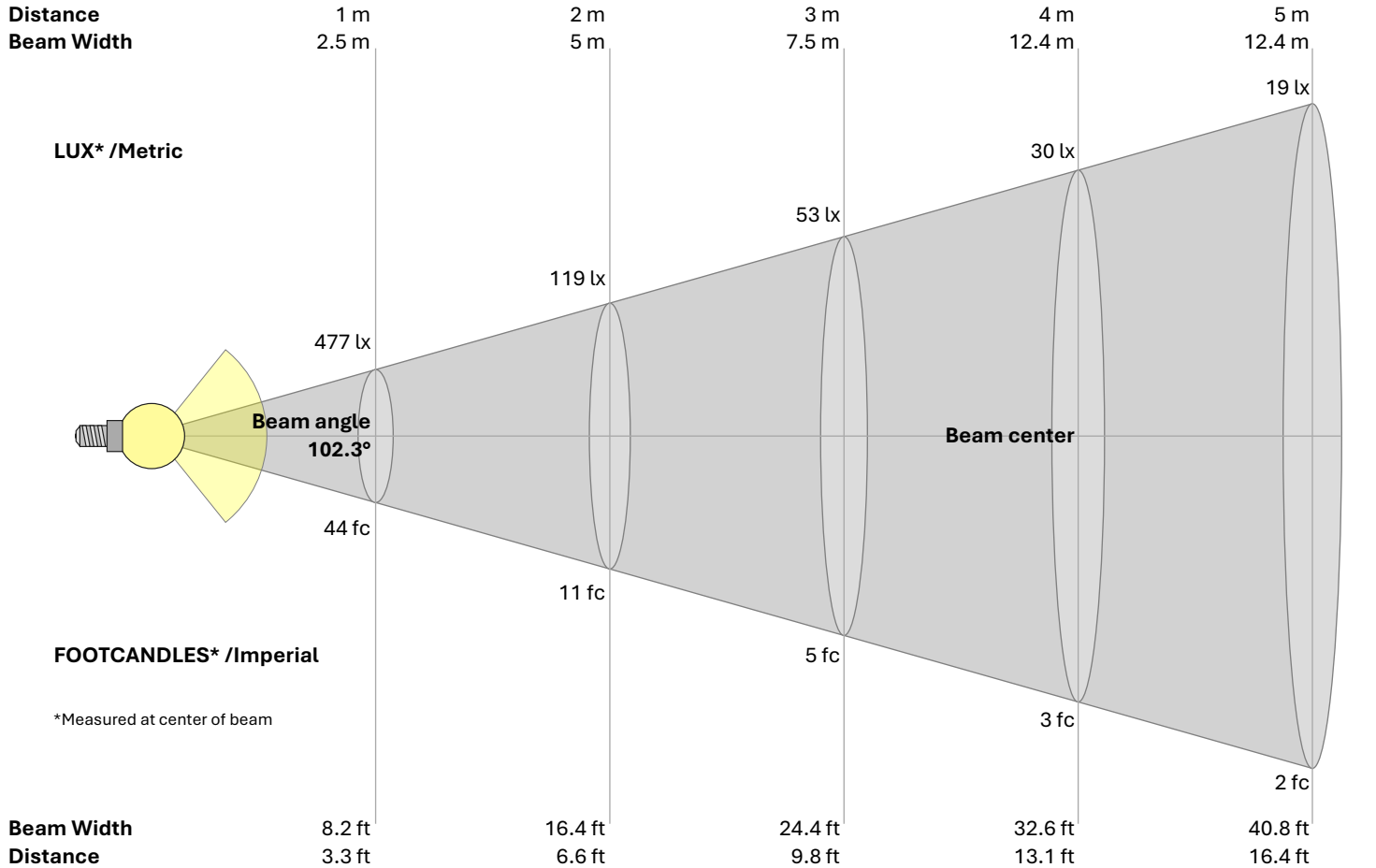
Light Measurement Report

Print date: 10/3/2025

Measurement date and time: 9/29/2025 12:29:12 PM – Measurement no. VFR-250929-0166-MS

Operator: Shawn Blaszak

Beam Details



Beam intensities from 1 – 20 m																				
1	2	3	4	5	6	7	8	9	10	11	12	13	14	15	16	17	18	19	20	m
3.3	6.6	9.8	13.1	16.4	19.7	23	26.2	29.5	32.8	36.1	39.4	42.7	45.9	49.2	52.5	55.8	59.1	62.3	65.6	ft
477	119	53	30	19	13	10	7	6	5	4	3	3	2	2	2	2	1	1	1	lux
44.3	11.1	4.9	2.8	1.8	1.2	0.9	0.7	0.5	0.4	0.4	0.3	0.3	0.2	0.2	0.2	0.2	0.1	0.1	0.1	fc

Intensities in 0° c-plane																				
0°	5°	10°	15°	20°	25°	30°	35°	40°	45°	50°	55°	60°	65°	70°	75°	80°	85°	90°	95°	γ
477	473	463	448	432	420	402	381	354	321	263	195	133	89	65	46	30	15	3	1	cd
100%	99%	97%	94%	91%	88%	84%	80%	74%	67%	55%	41%	28%	19%	14%	10%	6%	3%	1%	0%	of 0°val

Intensities in 90° c-plane																				
0°	5°	10°	15°	20°	25°	30°	35°	40°	45°	50°	55°	60°	65°	70°	75°	80°	85°	90°	95°	γ
477	469	456	440	427	413	393	368	338	291	225	160	107	75	55	37	21	8	2	1	cd
100%	98%	96%	92%	90%	87%	82%	77%	71%	61%	47%	33%	22%	16%	11%	8%	4%	2%	0%	0%	of 0°val

Intensities in 180° c-plane																				
0°	5°	10°	15°	20°	25°	30°	35°	40°	45°	50°	55°	60°	65°	70°	75°	80°	85°	90°	95°	γ
477	472	461	446	431	420	401	377	349	311	249	181	122	82	60	42	25	11	2	1	cd
100%	99%	97%	93%	90%	88%	84%	79%	73%	65%	52%	38%	26%	17%	13%	9%	5%	2%	0%	0%	of 0°val

Intensities in 270° c-plane																				
0°	5°	10°	15°	20°	25°	30°	35°	40°	45°	50°	55°	60°	65°	70°	75°	80°	85°	90°	95°	γ
477	475	466	453	438	425	410	388	362	330	281	213	148	99	70	51	33	18	6	1	cd
100%	99%	98%	95%	92%	89%	86%	81%	76%	69%	59%	45%	31%	21%	15%	11%	7%	4%	1%	0%	of 0°val